

promac
ENGINEERING INDUSTRIES LIMITED



Over 50 years of
Engineering Excellence
in EPC

www.promacindia.com



Contents

Vision:

"To continue to be a world renowned provider of turnkey solutions in heavy engineering and manufacturing services. With over 50 years legacy, we strive to design, manufacture and supply innovative engineering products and customised solutions that meet our customer's expectations, maximize value to our stake holders and set new benchmarks for quality and efficiency.

We continue to build a sustainable business that contributes to the advancement of society and the well-being of the global community".

Mission:

"We achieve our vision by adopting collaborative partnerships and business process excellence, leveraging cutting-edge technologies and empowerment of our people".





01.	About us	01 - 02
02.	History and Milestones	03 - 04
03.	Global Footprint	05 - 06
04.	Industry Solutions	
	- Cement	07 - 18
	- Power	19 - 24
	- Mineral Beneficiation	25
	- Defence and Import Substitutes	25
	- Industrial Gear Boxes	25
05.	Infrastructure	
	- Machine Shop	27 - 28
	- Fabrication	29 - 30
	- Laboratory & Quality Control	31
	- Design and Engineering	32
06.	Technical Collaborations	33
07.	Testimonials	34
08.	Awards and Certificates	35
09.	Contact	36

Company

About us





Promac Engineering Industries Limited ('Promac') is an EPC major, active in the Cement, Power, Steel, and Mineral Processing Sectors. Further, Promac has also entered the Defence Sector, manufacturing of Industrial Gear Boxes and Import Substitutes.


Promac was established in the early seventies in Bengaluru, India and is equipped with a state-of-the-art integrated manufacturing facility (Heavy Fabrication / Machining) spread across 50,000 sq.mtrs.

Promac provides turnkey design, engineering, and manufacturing solutions for Heavy Engineering Process Plants and Bulk Material Handling Systems.

Promac has successfully executed 50+ Cement Projects, 10+ Power Projects, 9 Sponge Iron Projects, 3 Mineral Processing Projects and several other spares and equipment supplies across 5 Continents in 26 Countries.

History

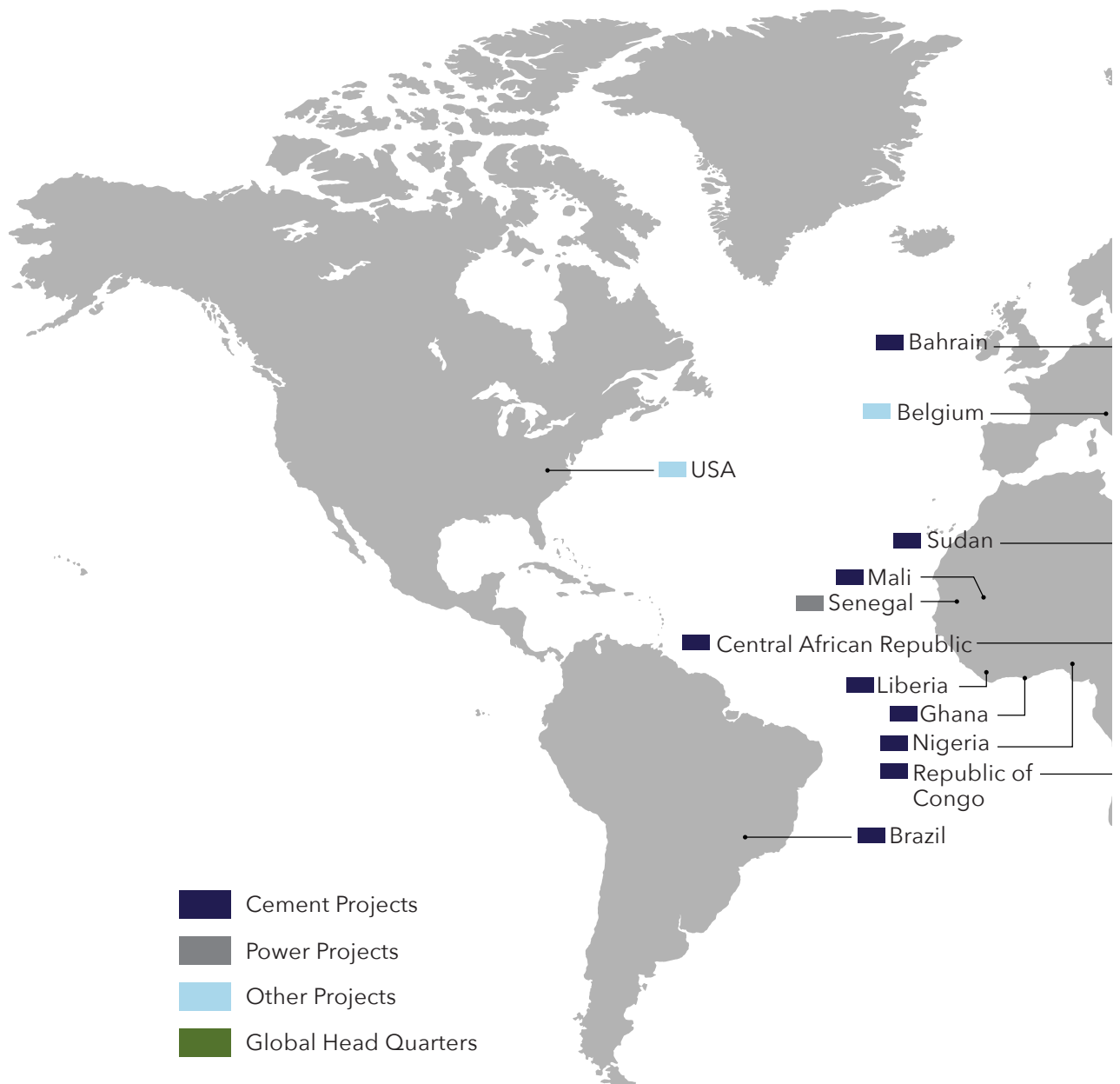
Company Milestones

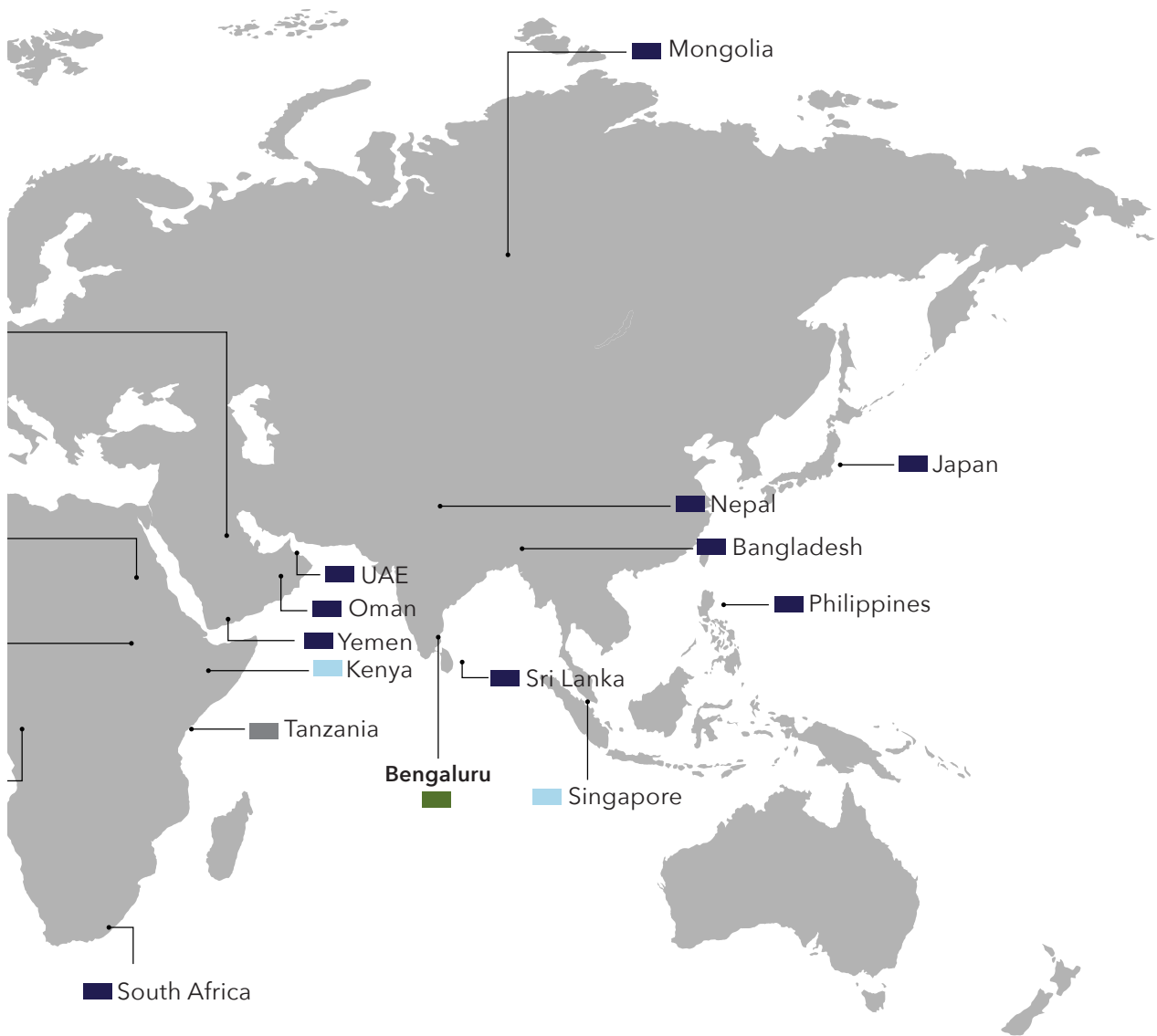
- 
- 1972** Established with a focus in manufacturing of bulk material handling systems
 - 1980** Forays into manufacture & supply of VSK cement plants under technical collaboration with NCCBM, India
 - 1988** Establishes technical collaboration with Nihon Cement Company, Japan (now known as Taiheiyo Engineering Corp.) for Rotary Kiln Cement Plant technology and successfully completes first cement plant upgrade
 - 2001** Commissions on EPC basis a 2000 TPD cement plant for JK Cement Works, Rajasthan, India
 - 2008** Commissions first Coal Handling Plant (CHP) Project for Karnataka Power Corporation Ltd for their Mega 1X 500 MW Power Plant at Bellary Thermal Power Station (BTPS), Karnataka, India
 - 2009** Commissions on EPC basis a 950 TPD Cement Plant for Falcon Cements in the Kingdom of Bahrain
 - 2011** Enters into technical collaboration with Famak S.A., Poland (Formerly known as Famur Famak S.A) for Stock Yard Equipment in Bulk Material Handling primarily used in Power Plants
 - 2012** Commissions a 3000 TPD Integrated Cement Plant for Sagar Cements, Andhra Pradesh, India
 - 2012** Commissions a 65 TPH Clinker Grinding Unit for Heidelberg Cement, Germany for their Liberia project
 - 2014** Commissions a first of its kind EPC Project for a Dual-Process Grey / White (2800/1750) TPD Cement Plant for JK Cement Works, Fujairah, U.A.E.

-
- 
- 2014** ● Commissions a 1500 TPD Cement Plant for Lake Cements Ltd in Tanzania, East Africa
 - 2016** ● Commissions a 100 TPH Clinker Grinding Unit for Taiheiyo Cement Corporation in Cebu, Philippines
 - 2017** ● Commissions a 2200 TPD Combi-Circuit (Roller Press + Ball Mill) Clinker Grinding Unit for Tokyo Eastern Cement Company, Trincomalee, Sri Lanka
 - 2018** ● Commissions on EPC basis a 1x125 MW Thermal Power Plant for Compagnie d' Electricite' du Senegal (CES) Senegal, West Africa
 - 2019** ● Commissions a 1600 TPD Clinker Grinding Unit at Mali, Africa for VICAT France
 - 2021** ● Recieves approval from Research Design and Standards Organisation (RDSO) of Indian Railways for the Design of Wagon Tippers & Side Arm Chargers as per latest G33 Rev 1 norms
 - 2021** ● Forays into Defence sector and bags first order from Bharat Earth Movers Limited (BEML)
 - 2022** ● Commissions 4 Paddle Feeders of 650 TPH capacity for Bellary Thermal Power Station, Karnataka India
 - 2022** ● Commissions 1500 TPD Clinker Grinding Unit for Star Cement Corporation, Liberia
 - 2022** ● Celebrates Golden Jubilee Year of operations
 - 2024** ● Establishes technical collaboration with Society for Technology and Action for Rural Advancement (TARA) for Calcined Clay Cement (LC3) / Limestone Calcined Clay (LC2) process technology.

Global Footprint

Accross 5 continents and 26 countries

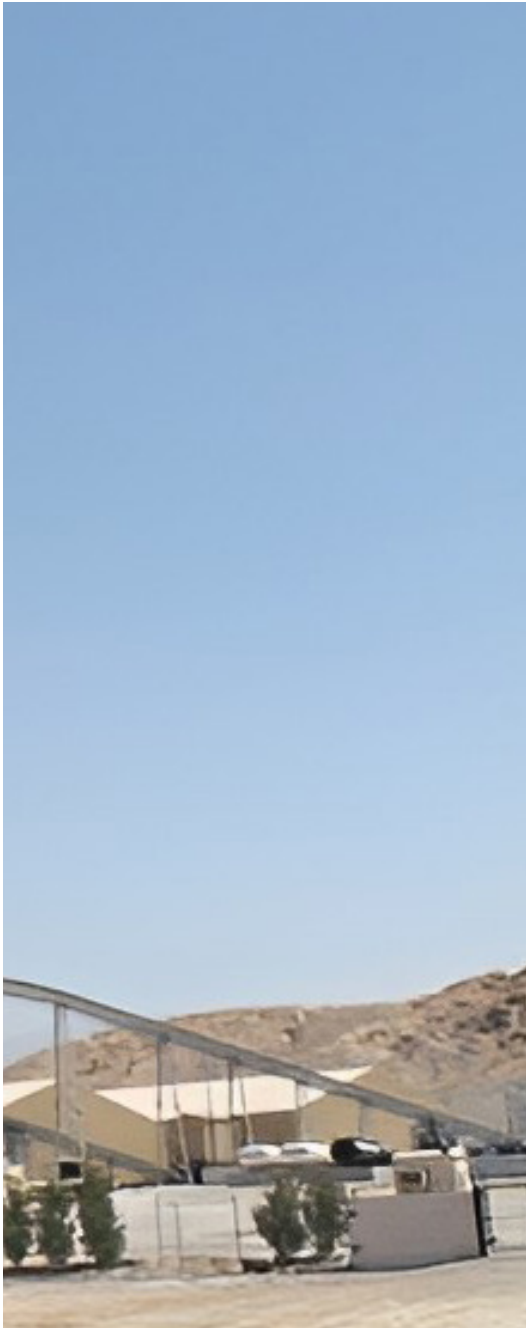




Industry Solutions

1. Cement





Promac offers EPC solutions (up to 2 million tons per annum) for Grey Cement, White Cement, and Dual-process Plants.

Since 1988, Promac has had an exclusive technical collaboration with M/s. Taiheiyo Engineering Corporation (TEC), Japan, a subsidiary of the world renowned Taiheiyo Cement Corporation (TCC), Japan.

Promac has an exclusive technical collaboration with Society for Technology and Action for Rural Advancement (TARA) for process technology of Limestone Calcined Clay Cement (LC3) / Limestone Calcined Clay (LC2), which helps reduce CO2 emissions by upto 40% in the manufacturing process.

Promac offers design, engineering, manufacturing, supply, erection and commissioning of a wide range of equipment.

Cement

Machines and Equipment

Pyro Processing Equipment:

1. RSP Calciners

Reinforced Suspension Pre-heater
(Taiheyo Engineering Corporation, Japan Design)

2. DDF Calciners

Dual Combustion Denitration Furnace
(Taiheyo Engineering Corporation, Japan Design)

3. Pre Heater Cyclones

(Taiheyo Engineering Corporation, Japan Design)

4. Rotary Kilns

5. Grate Coolers

6. Decolorisers

7. Taiheiyō Thermal Reactor (TTR)

For Plastic Waste Gasification and for Sewage Sludge Drying

8. Taiheiyō Coating Solution (TCS System)

To manage high sulphur raw materials and fuel

9. Taiheiyō Chlorine Bypass System (TCBS)

To solve heavy coating problems caused by Chlorine



Pre-heater Building depicting Calciner and Cyclones



Rotary Kiln



Decoloriser



Grate Cooler

Cement

Machines and Equipment

Grinding Equipment:

1. 'ASANO' Vertical Roller Mills:

- Limestone
 - Coal/Pet Coke
 - Clinker
- (Taiheyo Engineering Corporation, Japan Design)

2. Ball Mills

3. 'O-SEPA' Classifiers:

(Taiheyo Engineering Corporation, Japan Design)



'ASANO' Vertical Roller Mill



Ball Mill



'O-SEPA' Classifier

Cement

Machine and Equipment

Material Handling Equipment:

1. Linear and Circular Type Stackers
2. Linear, Circular and Bucket Wheel Type Reclaimers
3. Rotaside Wagon Tippers
4. Side Arm Chargers
5. Apron Feeders
6. Belt Conveyors
7. Crushers (Impact and Hammer type)
8. Bulk Material Feeders
9. Deep Bucket Conveyors (DBC)
10. Overland Belt Conveyor (OLBC) System



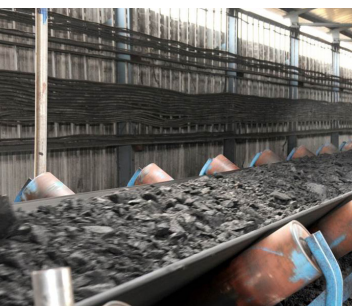
Linear Stacker



Bridge Reclaimer



Apron Feeder



Belt Conveyor



Wagon Tippler



Bulk Material Feeder



Deep Bucket Conveyor



Impact Crusher

Cement

Machines/Equipment

Pollution Control Equipment:

1. Pulse Jet Bag Filters and Bag Houses
2. Electrostatic Precipitators
3. Reverse Air Bag House

Storage Silos:

1. Flat Bottom
2. Inverted Cone



Electrostatic Precipitator



Reverse Air Bag House



Silos

Cement

Key Projects

A. Integrated Cement Plants:

- JK Cement Works - A first of its kind 2800 TPD Grey / 1750 TPD White Cement Plant on EPC basis, Fujairah, U.A.E.
- Sagar Cements Ltd - 3000 TPD Plant, Andhra Pradesh, India
- Lake Cement Ltd - 1500 TPD Plant, Tanzania, Africa
- Asian White INC FZE, UAE - 800 TPD White Cement Plant, Fujairah, UAE
- Falcon Cements - 950 TPD Plant, Kingdom of Bahrain
- The Nile Cement Co. Ltd, - 1000 TPD Plant, Sudan
- Government of Republic of Congo - 600 TPD Plant, Republic of Congo, Africa
- JK Cement Works, Mangrol, Rajasthan, India
- Hills Cement Co Ltd. - 1000 TPD Plant, Meghalaya, India
- Anjani Portland Cement Pvt. Ltd, - 900 TPD Plant, Andhra Pradesh, India
- Government of Central African Republic - 400 TPD Plant, Bangui, Central African Republic

B. Clinker Grinding Units:

- Tokyo Eastern Cement Company Ltd - 110 TPH Clinker Grinding Unit, Sri Lanka
- Taiheiyo Cement Philippines, Inc - 100 TPH Clinker Grinding Unit, Cebu, Philippines
- VICAT Cement Group (Cements Et Matériaux Du Mali) - 80 TPH Clinker Grinding Unit, Mali, Africa
- Heidelberg Cement (CEMENCO) - 65 TPH Clinker Grinding Unit, Liberia, Africa
- Star Cement Corporation, 75 TPH Clinker Grinding Unit, Liberia
- Lafarge South Africa Ltd - 25 TPH Clinker Grinding Unit, Richards Bay, South Africa
- Star Cement Corporation, 75 TPH Clinker Grinding Unit, Ghana

Key Customers:

International



Domestic



Industry Solutions

2. Power





Promac offers a wide range of EPC solutions for Bulk Material Handling Systems and Balance of Plant (BOP), primarily used in the Power Industry.

Promac has established itself as an equipment major for Power Plants, including complete supply and erection of full Coal Handling Plants (CHP) for Mega Power Projects.

Promac in collaboration with world-renowned Famak S.A. of Poland has established itself as an industry leader in supplying Stock Yard Equipment for Bulk Material Handling Systems.

Power

Machines/Equipment

1. Bucket Wheel Stacker-cum Reclaimers
2. Rotaside Wagon Tippers
3. Side Arm Chargers
4. Paddle / Plough Feeders
5. Apron Feeders
6. Cross Country Conveyors / Belt Conveyors



Wagon Tippler & Side Arm Charger



Paddle / Plough Feeder



Belt Conveyor



Stacker Cum Reclaimer

Power

Key Projects

A. On EPC Basis:

1. Balance of Plant (BOP):

- Compagnie d' Electricite' du Senegal (CES) - 125 MW Thermal Power Plant, Senegal, West Africa

2. Coal Handling Plant (CHP):

- Karnataka Power Corporation Ltd (KPCL) - 1 x 500 MW Coal Handling Plant, Bellary, India
- DVC Bokaro - 1 x 500 MW Conveyor Package for Bokaro Thermal Power Station, Jharkhand, India
- NALCO, Damanjodi, Odisha - Wagon Tippler, Side Arm Charger and Associated Conveying Systems

B. Machine Supply (In India):

1. Stacker CUM Reclaimers:

- 2 nos, 3850 TPH - NTPC Patratu Thermal Power Station, Jharkhand
- 4 nos, 2300 TPH - Ennore SEZ Thermal Power Station, Tamil Nadu
- 1 no, 2200 TPH - Tuticorin Thermal Power Station, stage-IV, Tamil Nadu
- 1 no, 1760 TPH - NTPC Unchahar Thermal Power Station, Uttar Pradesh
- 1 no, 1500 TPH - MAHAGENCO Bhusawal Thermal Power Station, Maharashtra
- 1 no., 1260 TPH - Raichur Thermal Power Station (RTPS), Raichur, Karnataka
- 1 no., 1250 TPH - Bellary Thermal Power Station (BTPS), Bellary, Karnataka

2. Rotaside Wagon Tippers and Side Arm Chargers, Apron Feeders and Dribble Conveyors:

- 4 sets – Yeramaras Thermal Power Station (RTPS), Raichur, Karnataka
- 2 sets – Bellary Thermal Power Station (BTPS), Bellary, Karnataka
- 2 sets – MAHAGENCO Bhusawal Thermal Power Station, Maharashtra
- 2 nos - NTPC Unchahar Thermal Power Station, Uttar Pradesh
- 1 no - NTPC Ltd. Dadri - Side Arm Charger

3. Paddle Feeders:

- 4 nos, 780 TPH - Bellary Thermal Power Station (BTPS), Bellary, Karnataka
- 2 nos, 185 TPH - NTPC North Karanpura Thermal Power Station Jharkhand
- 8 nos, 2625 TPH - NTPC Patratu Thermal Power Station, Jharkhand
- 2 nos 225 TPH - NTPC Patratu Thermal Power Station, Jharkhand

Key Customers:



Industry Solutions

3. Mineral Beneficiation

Promac offers complete turnkey solutions for Mineral Processing Industries with a focus on Gold, Iron, and Copper ores.

4. Defence and Import Substitutes

Promac has ventured into the Defence sector and Import Substitutes market, offering customized contract manufacturing solutions including precision machining sub-assemblies and components.

5. Industrial Gear Boxes

Promac offers a range of heavy duty gear boxes catering to various industrial applications.

6. Port

Backed by its collaboration with Famak S.A. of Poland, Promac has ventured into the manufacturing and production of various port equipment.

- Ship Unloaders
- Electric Level Luffing Cranes (ELL)
- Rail Mounted Gantry Cranes (RMGC)
- Ship Loaders

7. Sponge Iron

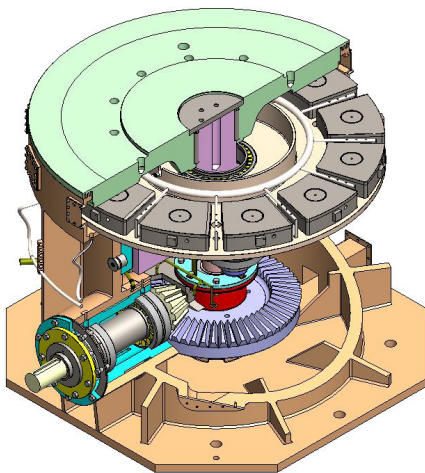
Promac offers complete turnkey solutions for Sponge Iron plants.



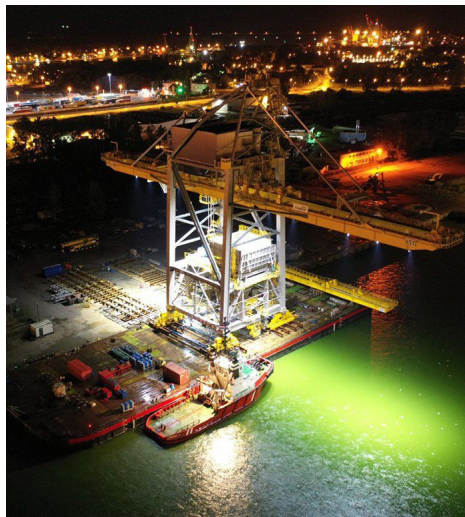
Mineral Beneficiation



Defence



Industrial Gear Boxes



Port



Sponge Iron Plant

Infrastructure

Machine Shop



Vertical Turret Lathes with machining capacity up to 10.5m Φ , 3m height and job weight of 100 tonnes



Gear Hobbing Machine up to 8m Φ



Floor Boring Machines up to 6m travel length with spindle Φ of 130 mm



4m Φ Vertical Turret Lathe



Heavy Duty CNC Lathe



EOT Cranes upto 100 tonne Handling Capacity

Infrastructure

Fabrication



View of Heavy Fabrication Bay



Plate Rolling Machines for cold rolling thickness up to 110mm thick x 3m width



Automated Submerged Arc Welding machine



Robo Plasma Cutting Machine (4 axis)



CNC Water Jet Cutting Machine



CNC Plasma Arc / Oxy Fuel Cutting



Shot Blasting Booth



Stress Relieving Furnace



Paint Booth

Infrastructure

Laboratory and Quality Control



Spectro Analyser and Universal Testing Machine



Ultra Sonic Testing Machine



Magnetic Particle Tester

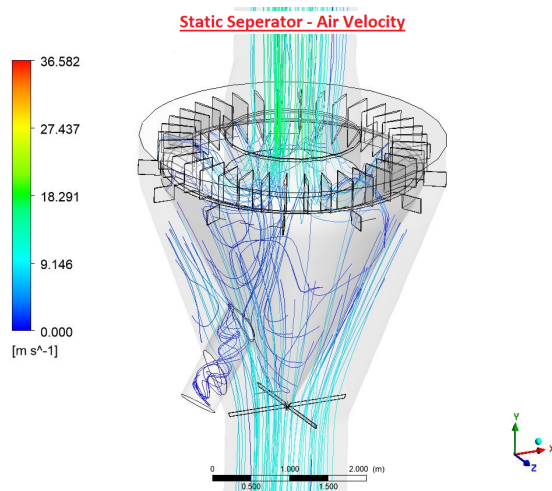


Hardness Tester

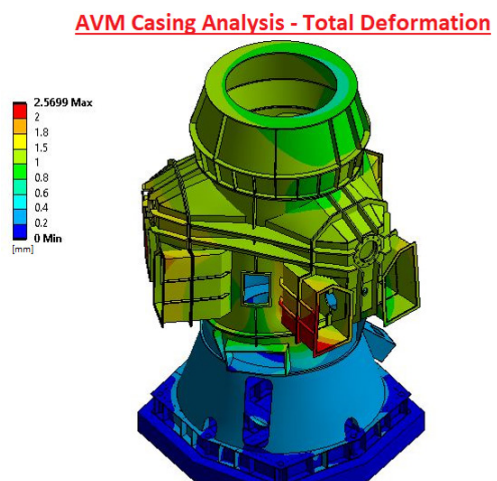


Paint Thickness Gauge

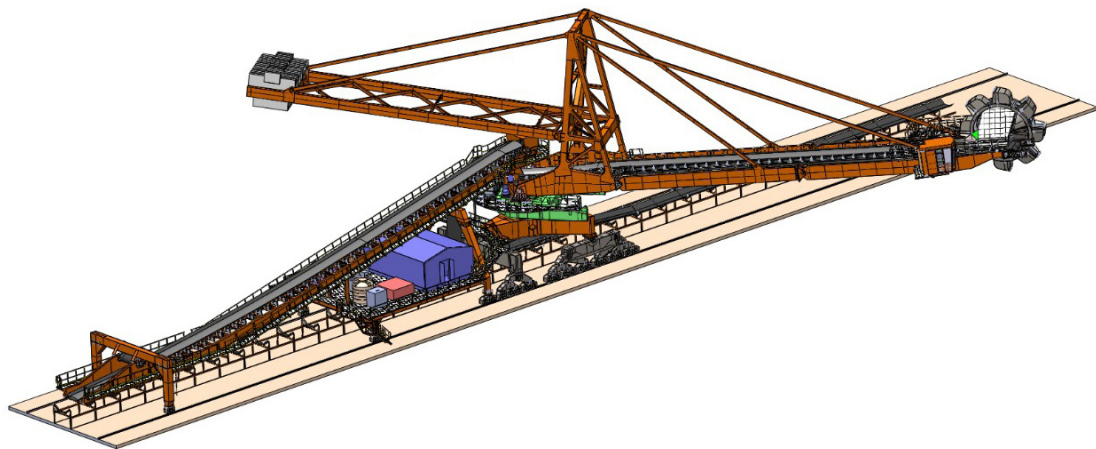
Design and Engineering Tools



Ansys for Computational Fluid Dynamics (CFD)



Ansys for Finite Element Analysis (FEA)



Solid Works for 3D Modelling

Technical Collaborations



Taiheiyo Engineering Corporation (TEC), Japan.

1. Collaborator since 1987
2. Provides technology for Cement Plants upto 2 MTPA capacity including the following:
 - Chlorine Bypass technology
 - TCS System for high sulphur raw materials & fuel
 - Taiheiyo Thermal Reactor (TTR) for Plastic Waste Gasification and for Sewage Sludge Drying



FAMAK S.A., POLAND (Formerly known as FAMUR FAMAK S.A)

1. Collaborator since 2011
2. Provides technology for Bulk Material Handling and Port handling equipment



Society for Technology and Action for Rural Advancement (TARA)

1. Collaborator since 2024
2. Provides process technology for Limestone Calcined Clay Cement (LC3) / Limestone Calcined Clay (LC2) which helps reduce CO2 emissions during cement manufacturing

Testimonials



Mr. Madhav Krishna Singhania

Deputy MD & CEO - JK Cement Group

"JK Cement has worked with Promac Engineering since the last 25 years. We have set up two milestones projects in Mangrol and Fujairah with their equipment. Both plants have performed beyond the guaranteed numbers and equipment reliability and support from Promac is excellent."



Mr. Sreekanth Reddy Sammidi

Joint Managing Director - Sagar Cements Ltd.

"We have known Promac since 1994 when we placed our first order on them for a grinding mill. In 2018 we took over a 2000 TPD plant supplied by Promac near Tadipatri in Andhra Pradesh and with almost no modification we were able to push the plant to produce 3000 TPD capacity. Promac's state of the art workshop provides us with timely maintenance support for all our plant requirements."



Mr. Yoshihisa Miyake

Senior Managing Director - TEC

"Taiheiyo Engineering Corporation (TEC) has been working closely with Promac Engineering since the early 1990s, and we have successfully completed many projects all over the world. We believe that Promac is well equipped to satisfy customers' precise needs. We look forward to building on our business relationship with Promac in the years to follow."

Awards & Certificates



Export Award from EEPC India 2017



Export Award from EEPC India 2013 - 2014



Export Award from EEPC India 2012 - 2013



applies a management system in line with the above standard for the following scope

Design, Manufacture and Supply of Engineering Product and Customized Solutions for all type of Process Industries

Certificate Registration No.04 100 057198
Audit Report No 2.5-2973/2005
Valid from 11.10.2020
Valid until 20.09.2023
Initial certification 21.09.2005

[Signature]

Certification Body
at TÜV NORD CERT GmbH
Mumbai, 11.10.2020

This certification was conducted in accordance with the TÜV NORD CERT auditing and certification procedures and is subject to regular surveillance audits.

TÜV NORD CERT GmbH
Langemarkstrasse 20
45141 Essen
www.tuev-nord-cert.com

TÜV India Pvt. Ltd. 801, Raha Plaza - 1, L.B.S. Marg, Ghakopar (W), Mumbai - 400 086, India
www.tuev-nord.com/in



ISO Certificate

Contact

Registered Office & Factory:

Promac Engineering Industries Limited

Plot No.306,307, 308, 309 & 311

KIADB Industrial Area, Harohalli 2nd Phase,

Harohalli Hobli, Kanakapura Taluk,

Ramanagara District,

Karnataka, India - 562112.



Scan for location



Scan for website

Phone Number:

+91 8026320372, +91 8026320373

Email Address:

sales@promacindia.com

Website:

www.promacindia.com



Plot No.306,307, 308, 309 & 311 KIADB Industrial Area,
Harohalli 2nd Phase, Harohalli Hobli, Kanakapura Taluk,
Ramanagara District, Karnataka, India - 562112.